

Most Recent (2009) Primary School Completion Rate*

Source: UNESCO Institute for Statistics online database

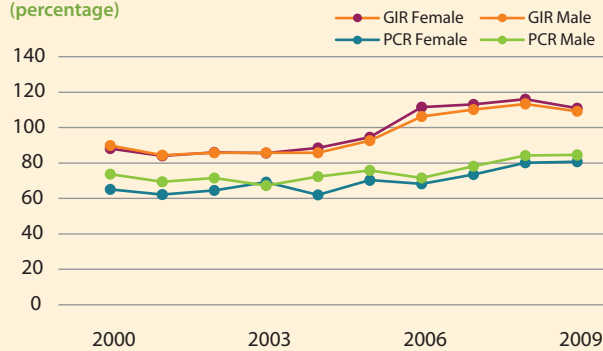
*Throughout this document 'Primary School Completion Rate' refers to a proxy measure of completion—'Gross Intake Ratio to the last grade of primary school'.

Education Indicators

	2000	2001	2002	2003	2004	2005	2006	2007	2008	2009
Education share of recurrent budget (%)	—	—	—	21	27	27	23	—	—	—
Public education expenditure as a % of GDP	—	—	—	6	6	5	6	—	—	—
Share of primary education in recurrent education budget (%)	—	—	—	—	—	34	—	—	—	—
Primary school net enrollment rate	63	58	60	63	58	65	65	71	77	76
Primary school pupil teacher ratio	34	33	32	31	32	33	35	32	32	33
Percentage of repeaters in primary school (female)	5	5	5	6	6	6	6	6	6	6
Percentage of repeaters in primary school (male)	5	5	6	6	6	6	7	7	7	7
Primary school completion rate (female)	65	62	65	69	62	70	68	74	80	81
Primary school completion rate (male)	74	69	72	67	72	76	72	78	84	85
Transition rate from primary to secondary school (female)	83	93	87	85	100	92	100	98	92	—
Transition rate from primary to secondary school (male)	81	91	87	96	95	90	100	97	91	—

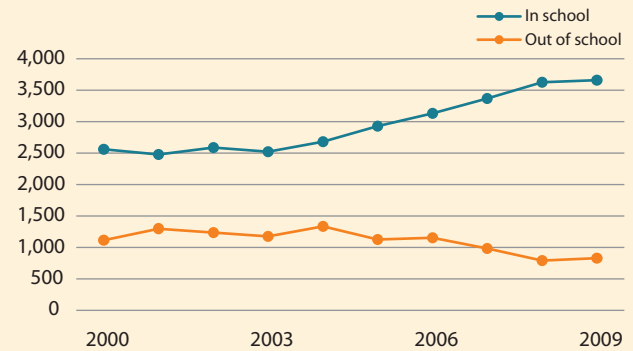
Source: UNESCO Institute for Statistics online database (normal font) and FTI Country Reports (bold). — : Data not available

Primary School Gross Intake Ratio (GIR) and Primary School Completion Rate (PCR) (percentage)



Source: UNESCO Institute for Statistics online database

Total Primary School Enrollment and Children Out of School (thousands)



Source: UNESCO Institute for Statistics online database

Education Official Development Assistance[†] (US\$ millions)

	Commitments									Disbursements								
	2002	2003	2004	2005	2006	2007	2008	2009	2002	2003	2004	2005	2006	2007	2008	2009		
Education (total)	54.0	238.1	174.4	104.6	376.8	187.1	194.1	127.1	95.4	153.9	143.6	147.2	162.7	125.3	130.0	184.4		
—Basic education	27.2	140.3	88.5	68.5	201.4	127.3	114.5	67.3	69.7	88.3	83.4	89.9	92.9	65.9	74.2	96.0		
—Secondary education	9.8	31.2	21.1	16.2	83.1	28.2	37.4	26.9	11.6	26.3	22.3	14.2	27.9	28.2	26.4	38.9		
—Post-secondary education	17.0	66.6	64.8	19.9	92.2	31.6	42.2	32.9	14.1	39.3	38.0	43.0	41.9	31.2	29.4	49.5		
Education ODA per capita (US\$)	2.6	11.4	8.1	4.8	16.8	8.2	8.3	5.3	4.7	7.3	6.7	6.7	7.3	5.5	5.6	7.7		
Basic ed. ODA per primary-aged child (US\$)	8.6	43.6	27.1	20.7	60.0	37.5	33.3	19.3	22.0	27.4	25.5	27.2	27.7	19.4	21.6	27.6		

Source: OECD/DAC CRS Online database and World Bank EdStats online database

† All values given in constant 2008 US\$ millions. Disbursement data for Denmark in 2002, Finland in 2004 and 2005 and for Luxembourg in 2002 and 2003 are not available. Basic education ODA includes 50% of Education ODA amounts not allocated by level and 10% of amounts allocated to general budget support. Secondary and Post-secondary education ODA each includes 25% of the amounts not allocated by level and 5% of amounts allocated to general budget support. Total Education ODA figures include the amounts for the three levels above and a notional 20% of general budget support received by the country (therefore amounts by levels don't add up to total education amounts).