

Most Recent (2009) Primary School Completion Rate*

Source: UNESCO Institute for Statistics online database

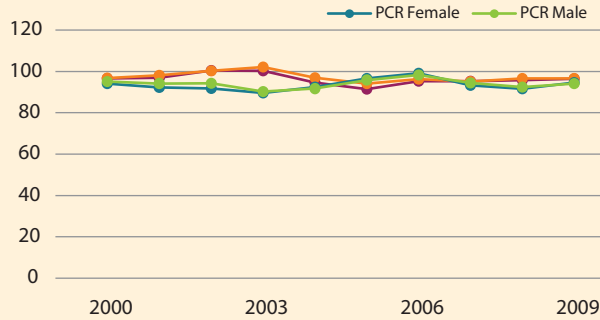
*Throughout this document 'Primary School Completion Rate' refers to a proxy measure of completion—Gross Intake Ratio to the last grade of primary school!

Education Indicators

| | 2000 | 2001 | 2002 | 2003 | 2004 | 2005 | 2006 | 2007 | 2008 | 2009 |
|--|------|------|-----------|-----------|-----------|-----------|-----------|------|------|------|
| Education share of recurrent budget (%) | 19 | 22 | 24 | 23 | 24 | 25 | 26 | 27 | 19 | — |
| Public education expenditure as a % of GDP | 4 | 4 | 4 | 5 | 5 | 5 | 6 | 7 | 6 | — |
| Share of primary education in recurrent education budget (%) | — | — | 16 | 47 | 45 | 42 | 46 | — | — | — |
| Primary school net enrollment rate | 87 | 86 | 86 | 85 | 88 | 85 | 85 | 83 | 84 | 84 |
| Primary school pupil teacher ratio | 24 | 24 | 24 | 24 | 24 | 24 | 24 | 24 | 24 | 24 |
| Percentage of repeaters in primary school (female) | 0 | 0 | 0 | 0 | 0 | 0 | 0 | 0 | 0 | 0 |
| Percentage of repeaters in primary school (male) | 0 | 0 | 0 | 0 | 0 | 0 | 0 | 0 | 0 | 0 |
| Primary school completion rate (female) | 94 | 92 | 92 | 90 | 92 | 97 | 99 | 93 | 92 | 95 |
| Primary school completion rate (male) | 95 | 94 | 94 | 90 | 92 | 96 | 98 | 94 | 93 | 94 |
| Transition rate from primary to secondary school (female) | 97 | 99 | 100 | 100 | 100 | 100 | 99 | 100 | 100 | — |
| Transition rate from primary to secondary school (male) | 100 | 100 | 97 | 98 | 98 | 100 | 99 | 100 | 99 | — |

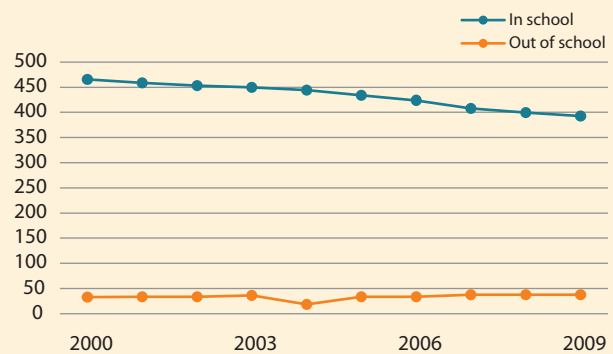
Source: UNESCO Institute for Statistics online database (normal font) and FTI Country Reports (bold). — : Data not available

Primary School Gross Intake Ratio (GIR) and Primary School Completion Rate (PCR) (percentage)



Source: UNESCO Institute for Statistics online database

Total Primary School Enrollment and Children Out of School (thousands)



Source: UNESCO Institute for Statistics online database

Education Official Development Assistance* (US\$ millions)

| | Commitments | | | | | | | | | Disbursements | | | | | | | | |
|---|-------------|------|------|------|------|------|------|------|------|---------------|------|------|------|------|------|------|--|--|
| | 2002 | 2003 | 2004 | 2005 | 2006 | 2007 | 2008 | 2009 | 2002 | 2003 | 2004 | 2005 | 2006 | 2007 | 2008 | 2009 | | |
| Education (total) | 8.4 | 17.1 | 40.0 | 24.8 | 21.8 | 14.3 | 29.7 | 32.3 | 6.2 | 16.8 | 17.2 | 14.0 | 14.6 | 19.2 | 30.2 | 28.0 | | |
| —Basic education | 3.1 | 6.7 | 17.2 | 16.4 | 11.6 | 3.4 | 7.5 | 7.4 | 2.8 | 6.1 | 6.6 | 4.0 | 3.4 | 6.6 | 12.3 | 8.8 | | |
| —Secondary education | 1.7 | 3.3 | 12.7 | 1.9 | 2.5 | 1.8 | 12.0 | 10.5 | 1.8 | 3.8 | 3.3 | 2.4 | 2.2 | 5.5 | 5.5 | 6.6 | | |
| —Post-secondary education | 3.7 | 7.1 | 10.1 | 6.5 | 7.8 | 9.1 | 10.2 | 14.5 | 1.6 | 6.9 | 7.2 | 7.6 | 8.9 | 7.1 | 12.4 | 12.7 | | |
| Education ODA per capita (US\$) | 1.7 | 3.4 | 7.9 | 4.8 | 4.2 | 2.7 | 5.6 | 6.1 | 1.2 | 3.3 | 3.4 | 2.7 | 2.8 | 3.7 | 5.7 | 5.3 | | |
| Basic ed. ODA per primary-aged child (US\$) | 6.5 | 14.2 | 37.3 | 36.2 | 26.1 | 7.9 | 17.9 | 18.0 | 5.8 | 12.9 | 14.4 | 8.9 | 7.7 | 15.2 | 29.1 | 21.3 | | |

Source: OECD/DAC CRS Online database and World Bank EdStats online database

† All values given in constant 2008 US\$ millions. Disbursement data for Denmark in 2002, Finland in 2004 and 2005 and for Luxembourg in 2002 and 2003 are not available. Basic education ODA includes 50% of Education ODA amounts not allocated by level and 10% of amounts allocated to general budget support. Secondary and Post-secondary education ODA each includes 25% of the amounts not allocated by level and 5% of amounts allocated to general budget support. Total Education ODA figures include the amounts for the three levels above and a notional 20% of general budget support received by the country (therefore amounts by levels don't add up to total education amounts).