

Most Recent (2008) Primary School Completion Rate*

Source: UNESCO Institute for Statistics online database

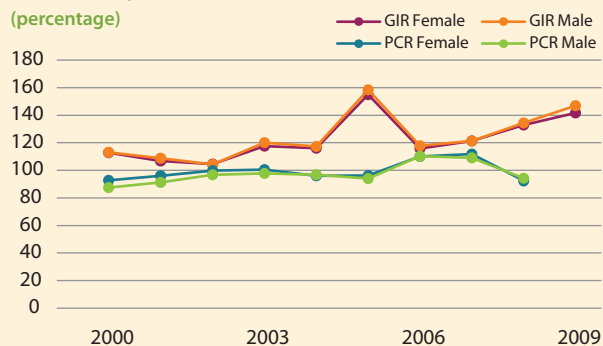
*Throughout this document 'Primary School Completion Rate' refers to a proxy measure of completion—'Gross Intake Ratio to the last grade of primary school'.

Education Indicators

	2000	2001	2002	2003	2004	2005	2006	2007	2008	2009
Education share of recurrent budget (%)	—	18	20	18	18	19	17	—	—	—
Public education expenditure as a % of GDP	6	—	8	—	5	—	—	5	—	6
Share of primary education in recurrent education budget (%)	—	—	—	—	24	—	—	27	—	—
Primary school net enrollment rate	94	93	89	81	85	86	90	87	89	90
Primary school pupil teacher ratio	33	32	32	31	33	34	33	32	31	30
Percentage of repeaters in primary school (female)	1	0	1	1	1	0	0	0	0	0
Percentage of repeaters in primary school (male)	1	1	1	1	1	0	0	1	0	0
Primary school completion rate (female)	93	96	100	100	96	96	110	112	92	—
Primary school completion rate (male)	87	91	97	98	97	94	110	109	94	—
Transition rate from primary to secondary school (female)	98	98	100	99	99	99	97	98	99	—
Transition rate from primary to secondary school (male)	95	96	98	99	96	95	95	96	96	—

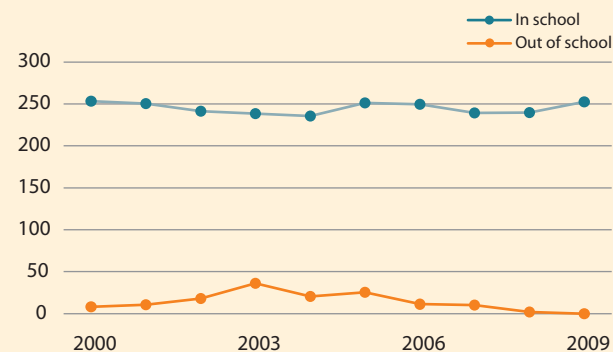
Source: UNESCO Institute for Statistics online database (normal font) and FTI Country Reports (bold). — : Data not available

Primary School Gross Intake Ratio (GIR) and Primary School Completion Rate (PCR) (percentage)



Source: UNESCO Institute for Statistics online database

Total Primary School Enrollment and Children Out of School (thousands)



Source: UNESCO Institute for Statistics online database

Education Official Development Assistance[†] (US\$ millions)

	Commitments									Disbursements								
	2002	2003	2004	2005	2006	2007	2008	2009	2002	2003	2004	2005	2006	2007	2008	2009		
Education (total)	47.9	46.0	44.0	29.4	55.9	37.1	46.1	58.5	17.9	37.9	33.6	37.7	39.2	38.8	34.0	28.0		
—Basic education	9.6	11.9	13.2	18.9	24.0	12.5	3.3	19.5	10.5	7.9	6.9	8.3	17.0	18.7	13.6	5.2		
—Secondary education	21.4	2.0	1.1	1.2	5.7	2.1	26.4	10.2	0.7	2.1	1.2	1.2	1.7	1.4	1.6	2.5		
—Post-secondary education	17.0	32.1	29.6	9.2	26.2	22.5	16.4	28.8	6.7	27.8	25.5	28.1	20.5	18.7	18.7	20.2		
Education ODA per capita (US\$)	19.5	18.5	17.5	11.5	21.6	14.2	17.5	21.9	7.3	15.2	13.4	14.8	15.2	14.9	12.9	10.5		
Basic ed. ODA per primary-aged child (US\$)	40.3	51.6	59.5	72.0	95.0	51.1	14.1	85.1	43.9	34.2	31.2	31.7	67.4	76.7	57.7	22.9		

Source: OECD/DAC CRS Online database and World Bank EdStats online database

† All values given in constant 2008 US\$ millions. Disbursement data for Denmark in 2002, Finland in 2004 and 2005 and for Luxembourg in 2002 and 2003 are not available. Basic education ODA includes 50% of Education ODA amounts not allocated by level and 10% of amounts allocated to general budget support. Secondary and Post-secondary education ODA each includes 25% of the amounts not allocated by level and 5% of amounts allocated to general budget support. Total Education ODA figures include the amounts for the three levels above and a notional 20% of general budget support received by the country (therefore amounts by levels don't add up to total education amounts).